



# INLAND BEEMAIL

Monthly newsletter of the Inland Empire Beekeepers Association

Volume 11, Issue 3 — March 2006 — [www.inlandbeemail.com](http://www.inlandbeemail.com)

Presidents  
Corner:

## Presidents Corner:

First and foremost CONGRATULATIONS to Faye and Frank Seiler!! Anna Jeanette Seiler born 10:10am Feb 22, 2005 at 8lb 3oz and 20 1/4".

What a wicked winter. All those discussions about emergency feeding may pay off this year. Lots of local beekeepers are predicting high losses. I have reports of quite a few including some that are 100% loss rates. Hang in there and be ready.

Our meeting this month is the regular type. Lets make sure we say hello to the folks from the class and encourage them to attend our meeting and all future meetings. Networking is a wonderful thing. I think we are doing the class members a disservice by not constantly encouraging them to attend the meetings and field days. A new beekeeper trying to do it all by themselves is going to have a very difficult time what with all the new requirements for modern beekeeping.

The bees are doing great in the almonds this month. This last week was so nice that we even had nectar coming in. The hives are in great shape for build-

ing NUCs. Travis, John, and I got in two loads of queens from Kona the last couple of months and I'm real impressed with them. This is the first time I have really worked with Italians and they are something else. If there is an empty cell, the queen is going to put an egg in it. We just got the Kona Carnolians so I can say they look good but that is about it. We have a good five weeks for them to build up their Nucs before I bring them back to Spokane.

I continue to hear that some of the California beekeepers are having significant mite counts. This is something you need to monitor because it may affect beekeepers way up in Spokane. It will probably impact the package bee producers and the queen producers and the quantity and quality of packages this year. It also sounds like a lot of commercial hives that would normally go back to Texas are coming to Oregon/Washington due to the drought in Texas. We really do not need commercial hives with high mite counts and small hive beetles being dropped all over Washington State but that is what may happen. If you have not been studying small hive beetle, do so now. Wouldn't it be nice to have a state apiary inspector and some decent rules protecting resident beekeepers?

Hope all of you make the meeting on Friday the 10<sup>th</sup>.

### **Rough Weather Hits Almond Crop, Damage Unknown**

Temperatures dipped as low as 22 degrees in parts of California's Central Valley in mid-February, followed by a brief warming trend and then intense rain and wind, all of which is causing almond growers cause for concern. With many of the state's almond orchards in bloom, the wind in particular is an issue for blossoms as winds can knock blossoms from the trees, which can discourage bees from pollinating crops.

"It will be two or three weeks before we can see the damage," said Richard Price, Butte County Agricultural Commissioner. "However, we're not hearing a lot of concern about adequate

pollination. There have been some good warm days between the cold and the warm. The problem is the bloom has been scattered over a longer period of time, which makes it hard to judge the effectiveness of pollination across the growing region."

Evaluating damage and pollination is important in Butte County, which has about 40,000 acres of almonds with a value of \$108 million, representing about a third of the county's total agricultural production

<http://www.cfbf.com>

## SPRING TIME

### What to do with Drone Laying Queen or Queenless Hives in March?

Some of our hives will winter quite well only to come up with a queen that may have died or become a drone layer in March. This is a very disappointing experience as the hive may be strong and full of honey. What can be done?

It is usually inadvisable to introduce a mated queen to a drone laying hive or one that has been queenless for an unknown period of time. Under these circumstances it is best to combine the hive with another. Usually there will be one of your hives that will be weak but is headed by a fertile young laying queen that can be used to combine with the queenless/drone layer/laying worker hive.



Your first inspections should start once there is good flight activity and you observe bees with loads of pollen returning to the hive. Find the frames in the hive having some brood and separate them from the others. Inspect the frames for sealed worker brood. If the brood has a few or many bulging cells the queen is likely failing having used up all of her stored semen. Carefully inspect the cells to make certain there are not drone sized cells mixed in with worker cells. Sometimes there will be some drone cells mixed into the worker cells especially in old comb. When a queen is failing many worker cells will have drone brood in them. The larval stage will have the brood overflowing the cell and the sealed brood will have a bulging rounded cell cap rather than the flat slightly domed cap of worker brood. When a queen is just starting to fail there will be a mixture of worker and drone brood (in worker cells) together. Find the queen and kill her.

If there are many eggs in each worker cell and you have sealed bulging cells in the worker cells you probably have a laying worker. Again your inspections must be thorough as often a small cluster of bees will have the queen laying more than one egg in a cell but the sealed worker brood will look like normal worker brood. To conclude that you have a laying worker or drone laying queen the brood must show bulging larva in worker cells or bulging sealed worker cells.

If the hive is weak with just a frame or so of bees with a drone laying queen or is queenless or having a laying worker the hive probably is not worth combining with another. The best thing is to shake the bees from each of the frames in front of another hive and remove the equipment from the apiary. It is not necessary to find and kill the drone laying queen.

Once the hive has been dequeened of the drone laying queen or identified as having a laying worker it may be combined with another hive having a vigorous laying queen and as little as handful of worker bees. The best procedure is to move the stronger hive to the location of the weaker hive and place the hive containing the queen on top of the queenless hive. Reduce the number of boxes on the queenless hive to one. Add some syrup in a feeder to the box containing the queen and add any honey from the queenless hive if it is needed. Use a sheet of newspaper between the two hives cutting a 2" slot in the newspaper with your hive tool near the center of the cluster of the lower hive.

The new queen will usually be safe as there are enough of her bees around her that she is readily protected from the other hive. Not moving her location will also help keep her workers present. Putting her on top will force her workforce to travel through the new bees and help them get acquainted. Usually the two hives will not fight and kill each other with this type of system. The two hives will combine and begin looking like a good hive in a week or so. Sometimes the two hives will continue as separate units until you remove the newspaper so it is advisable to check back in about a week to verify that the two have combined and the queen is laying.

### Spring Feeding of Bees

This is a large topic with a wealth of excellent articles written about feeding of bees in the spring. I encourage you to read as much as you can and experiment with your bees to learn what works the best for you. The internet has a wealth of good information about feeding with a lot of individual experience that is usually filled with ideas that are new and often novel.

Many different types of feeders are available. All have advantages and disadvantages. Many of us just use the division board feeder that is similar in size to a deep or western frame and sits in the hive like a frame. The commercially available plastic division board feeder takes a space equivalent to two frames to allow sufficient space for the feeder. A standard 10 frame box will then have 8 frames and the division board feeder in it. The feeder will hold 3+/-qts of feed depending upon whether it is bulging out or in.

These feeders like to fill up with water if you are using migratory covers and the feeder is in the top box. The bees also tend to drown in the feed if you don't provide material for the bees to climb on while they are feeding. The feeders will tend to get

*(Continued on page 4)*

# February Minutes

—Linda Carney, Secretary

February 10, 2006

Vice President Frank Seiler called our February meeting to order. President Swenson is in California with the Sammons brothers enjoying warm weather and getting ready for the almonds to bloom.

**Treasurers Report** — Vice-President Seiler presented the Treasurer's Report. We had a recent deposit of \$255 and have spent \$2500 in fair expenses for honey, jars and supplies. We now have \$5,676.17 in checking and \$1,862.24 in savings for a total of \$7,538.41. The taxes have been filed and we paid \$9.41 in tax. The accountant will now be working on our federal taxes.

The Treasurer's report was accepted as presented.

**Minutes** — Linda Carney, Secretary, read the minutes of the January meeting. The minutes were accepted as read.

**Joy in Beekeeping report** - Joe briefly explained the grants that are given by the Walt Peterson Joy in Beekeeping Trust Fund. The recipient of this year's \$250 grant will be announced later in the meeting. Joe continued with the status of the Trust Fund. There is a \$5000 CD, \$1000 in savings, and a \$250 Joy of Beekeeping grant. The Joy in Beekeeping report was accepted as presented.

**Fair Reports**-Nothing was reported.

**Inland Beemail Report** – Dave Bearden stated the bee mail is now available on the website. Also, a great opportunity was presented! The last two years of the Inland Beemail can be purchased on a CD for only \$5! Frank or Dave are the ones to contact if you want a CD.

**Washington State Beekeepers Association (WSBA)**- Jerry Tate said he would meet next week with Steve Shepard and Ted Swenson. Jerry will also ask if Sue Colby is available for an artificial insemination presentation. He said that many subjects are going to be discussed at the upcoming

State meeting in Ellensburg.

**4 corners report**- several beekeepers have heard buzzing in their hives while others have dead hives. Vern Stack says he has more bees now than when he went into the winter. Will Moore suggested using a jar to listen for bee activity in the hive. Move the jar around and tap on the hive and you can hear your bees. Jerry Tate's bees are starting to brood up. He has found brood about the size of his hand and not capped. He also has noted that the brood is not next to the honey and that is not good. (Bees must be feeling warm). It is not good because if there is a cold spell and there is no nearby honey, the bees will not abandon the brood and they will starve.

**Old Business** –none

**New Business** – John Pierce received a call from Cecil Hicks, a retired teacher and free-lance writer and reporter. Mr. Hicks wants to do an article about Ramon Seiler being the youngest state certified beekeeper, another on collecting swarms, and another on how bees are used for pollination in Wenatchee.

**Joy in Beekeeping** — There were 4 beekeepers nominated for this year's Walt Peterson Joy in Beekeeping Trust Fund grant. Jim Miller was selected as the recipient of this year's \$250 grant. Julie Watts, Lee Berchtold, and Dave Bearden were the other nominees.

**PRIME** — Ed Gray from Prime, Primary Resource and Industry Management Education, attended the meeting to personally thank the members for the honey straw donations. He showed the contents of a teacher's kit as explained in the February 2006 Inland Beemail. "The major goal is to teach kids where their food comes from," he said. They want to teach 1<sup>st</sup> graders about bees and fruits. "The kits are a reinforcement tool." The non-profit group puts together many types of kits, which cost about \$150 each. The demonstration was very educational and entertaining. He had our complete attention.

Vern Stack made the motion to adjourn the meeting. Our meeting was adjourned.

*(Continued from page 2)*

very foul with dead bees and fermented moldy feed. I have been using wood floats and they help a little but not much. Some use straw, crumpled up chicken wire, wood shavings, etc. Manufacturers claim that the coarse surface prep on the inside saves bees and it may, they also claim special plastic bumps on the exterior surface keep out water and water still gets in. While these feeders are expedient for commercial operators I think there are better methods for small beekeepers.

Making your own division board feeders with masonite sides and pine edges is popular with many commercial beekeepers. These tend to be smaller in capacity than the plastic division board feeders but seem to have less problem with drowning bees or with rain water entering and ruining feed. They fit better in the hives not tending to bulge out with the pressure of the feed. You can find plans for these in the many of the bee books and on the internet.

The division board feeders must be removed from the hive during the honey flow or the bees will build comb in the feeder and fill it with honey. Removing this comb so you can put your feed in later is not much fun.

Using 1 gallon jars with lids that have been perforated with a nail inverted above the top frames within an empty deep box works very well as a feeder. These are placed directly above the cluster spaced above the frames with 3/8" thick sticks spacing the lid above the frames. The bees will take feed from these at a rate depending upon the number of small holes you place in the lid. The holes must be small enough that the syrup does not run out. Use a 3 to 5 d nail (frame nail) just perforating the lid. Put a half dozen for slow feeding and 20 or so for fast feeding. You can also use old 1 gallon paint cans or brand new 1 gallon cans that you can buy from paint dealers. This method controls the feed delivery rate, protects and retains the quality of the feed, does not kill any bees, will be accessed by the bees even during cold rotten weather and is inexpensive to implement. I think this is the best method of feeding for small beekeepers

Another popular method is large plastic soda pop bottles that are placed with the lid in a hole in your beehive lid. These will just have a small number of holes and are not good for feeding large quantities of feed fast but will work well for stimulative feeding. The problem with this type feeder is the sun warms the air in the

*(Continued on page 6)*

## 2006 Program

### Program for 2006

#### February

- ◆ What to do for first spring inspections
- ◆ Equalizing colony strength

#### March

- ◆ Disease Recognition
- ◆ How to feed bees for spring management
- ◆ How to recognize and what to do for queenless hives
- ◆ Prepare equipment for IEBA Apiary

#### April

- ◆ How to increase your number of hives
- ◆ Methods for starting Nucleus

hives and using Nucleus hives

- ◆ How to introduce a new queen into a strong hive
- ◆ Purchase and install packages in IEBA Apiary

#### May

- ◆ How to control swarming
- ◆ What to do if your hive has swarmed
- ◆ Spring field day at IEBA Apiary

#### June

- ◆ How to set up and operate a queen bank
- ◆ Raising your own queens

- ◆ Late summer requeening

#### July

- ◆ Evaluating your hives for mites

- ◆ Treating your hives for mites
- ◆ Summer field day, mating nucs at IEBA Apiary

#### August

- ◆ Picnic

#### September

- ◆ Preparations for Fair
- ◆ Fall feeding of bees
- ◆ Fall field day at IEBA Apiary

#### October

- ◆ Selection of hives for wintering
- ◆ Preparing your hives for winter

#### November

- ◆ Annual Thanksgiving dinner
- ◆ Invited speaker

#### December

- ◆ Elections
- ◆ Annual dinner
- ◆ Invited speaker

# Classified Ads

**Tate's Honey Farm** has all of your extracting and packaging needs as well as spring packages and queens. Woodenware for all your winter projects and spring needs. Shop hours are 8:30—2:00 every Saturday at E. 8900 Maringo, Millwood. Contact us at 509-924-6669 or online at [www.tateshoneyfarm.com](http://www.tateshoneyfarm.com)

## BEEBOXES BY LEE

Woodenware, standard or custom orders, IPM bottom boards, Hive top feeders, etc, select lumber. Order now to be ready for spring. Lee Berchtold (208) 687-1300

## NUC's - For Sale

Now taking orders for 06 Queens and Nucs 4.9mm and standard cell sizes available. Contact Travis Sammons at 509-928-4326

## Miller's Homestead

**Jim and Jenine Miller**

Cheney, WA 1-509-299-9085  
14606 Stangland Rd., Cheney. Look at our web site for prices on all available items.  
[www.millershomestead.com](http://www.millershomestead.com)

## NUC's For Sale

### RUSSIAN or KONA Queens

You Get:

#### Proven Queen

- ◆ 3 frames brood
- ◆ 1 frame honey
- ◆ 1 frame honey/empty comb
- ◆ 3 lbs. of bees

Chattaroy Hills Honey Farm  
Ted Swenson 220-0185

**Available: 21 or 28 April**

Limited #, First Come First Serve



**FOR SALE** - Approximately 50 used westerns  
\$11.00 each  
Contact Paul Schultz @ (509) 926-8550

## Web Site of the Month

Each month IEBA member Bob Hegerberg is going to share the latest in his favorite web sites on Beekeeping. Take some time to check this month's selections out.

<http://www.insectimages.org/>  
Insects images includes Bees

<http://www.tateshoneyfarm.com/>  
Jerry Tate's site

<http://www.millershomestead.com/>  
Jim Miller's site

## Why honeybees never forget a face

FOR an animal with a brain the size of a pinhead, the honeybee possesses remarkable mental abilities. It has already been shown that they can count; now it seems they can recognize human faces.

Adrian Dyer of the University of Cambridge and colleagues trained honeybees to associate a sucrose drink with a photograph of a particular face. The insects were then tested on their memory and recognition skills by being presented with the picture of this face and the pictures of three other faces not associated with any reward.

Of the seven bees tested, two lost interest in the trial and flew away. But the five remaining bees correctly identified the target face in more than 80 per cent of trials, even though the reward had been removed. Moreover, some bees remembered the face two days later, indicating that they had formed a long-term memory of it. Not bad for a creature whose brain contains a thousandth the number of neurons we have in our retina alone.

"Specialized neuronal circuitry is certainly not required," says Lars Chittka from Queen Mary, University of London, who worked on the project and believes it could have implications for the development of AI systems."

*From issue 2529 of New Scientist magazine, 10 December 2005, page 22*



## Recipe of the Month

### *Honey and Spice Blueberry Syrup*

- Makes 100 servings -

#### Ingredients

- 6 cups (4-1/2 lbs.) honey
- 2 cups water
- 2 teaspoons ground cinnamon
- 7 cups blueberries, fresh
- 1/4 cup lemon juice
- 2 teaspoons vanilla extract

#### Directions

Combine honey, water and cinnamon in a large, deep saucepan. Bring to a boil; reduce heat to medium-low. Simmer, stirring occasionally, until sauce thickens and reduces by approximately 2 cups, about 20 minutes. Cool to warm. Stir in blueberries, lemon juice and vanilla.

#### Serving Suggestions

Top waffles, pancakes or french toast or spoon over granola or yogurt.



(Continued from page 4)

feeder which expands and forces syrup out on the bees sometimes faster than they may take it.

Boardman feeders work well with nucs during summer. They are easy to use and do not require you to get in the hive to add feed. Some prefer them to feed large hives. Usually the bees will not take the feed in cold weather. Where the jars or cans inverted above the cluster will successfully feed in below freezing conditions the Boardman feeder will not be successful.

The hive top feeders work well for large quantity feeding. These are essentially liquid tight boxes with a screened feed access from within the hive. The feeder can easily be designed to take up to 5 gallons of feed in one feeder. These feeders are very effective at feeding large quantities of feed with little risk of killing any bees. The bees will often feed from these under cold conditions very well as the feed can be put on warm close to the cluster attracting them to the feed. The major problem with this feeder is keeping it bee tight. Placing a lid on the feeder often leaves large gaps between the top of the feeder and the lid allowing robbing bees to enter the feed space with subsequent large quantities of bees drowning in the feed. Rain water will also leak in diluting the feed and causing spoilage. This feeder is not meant to be able to meter feed for stimulative feeding. Its best use is for putting weight on the hive for winter stores.

Feeding a light syrup (1# sugar to 1# water or 1gallon sugar to 1 gallon water) will stimulate more brood rearing than a heavy syrup (2# sugar to 1 #water). However, if you want to feed quickly the best is a heavy syrup. The bees will still brood fine but not quite as much. However, you must get the water a bit hotter to make the heavy syrup than for the light syrup and it requires more stirring effort. Either syrup is fine for the bees the choice depends more upon the ability you have to make the heavy syrup and the need to feed faster or other factors. You can use either beet sugar or cane sugar, both are pure sucrose and are metabolized by the bees without problems with indigestible materials. **Do not use the corn syrup that is available at the grocery store, the bees cannot digest this material.**

The high fructose corn syrup (HFCS) that is used in much of our food is also satisfactory but is not easily available to most of us. I prefer the pure sugar to the HFCS as the syrup seems to be more readily converted to stores that are capped by the bees.

Feed can be placed on the hive anytime active flight is occurring. Once we get temperatures into the low 50's bees generally can be fed without problem. Weak hives generally will have problems taking feed and are best fed with sealed combs of honey. However, once it is warm enough even weak hives will be able to feed. The hive is limited by its ability to process the feed and will not feed if it cannot evaporate the water content down to that of cured honey.

Feeding syrup to bees is again one of those skills that comes with practice. It is often essential to feed your bees to insure their health and colony productivity. Having to feed your bees

(Continued on page 8)

## IEBA Contacts

### President

Ted Swenson  
(509) 238-6489  
tedandbarb@icehouse.net

### Vice President

Frank Seiler  
509-226-2382  
seilerbees@att.net

### Treasurer

Colette Lehinger  
509-924-1001  
blehinger@aol.com

### Secretary

Linda Carney  
509-448-0417  
tlclimo@yahoo.com

### Newsletter Editor

Dave Bearden  
509-226-5231  
nmsuaggie@icehouse.net

### Associate Editor

Frank Seiler  
509-226-2382  
seilerbees@att.net

### Spokane County Fair Chairman

Vacant

### WSU County Extension Liaison

Jerry Miller  
509-838-6347

### North Idaho State Fair Chairman

Jack Knox  
208-773-5452  
pjcx@adelphia.net

### Web Master

John Pierce  
509-242-2035  
admin@bee-mail.org

### WSBA at Large Delegate, Technical Advisory Program, & IEBA Bee Class Instructor

Jim Miller  
509-299-9085  
jandj@cet.com

### IEBA Program Chair & WSBA Area 6 Delegate

Bob Arnold  
509-276-2399  
sar3140@aol.com

### Joy in Beekeeping

Laura Shulenbarger (Chair)  
Al Dwinell  
Joe Jovanovich

### IEBA Historian

Jon Burcham  
509-928-4829

### IEBA Website

www.inlandbeemail.com

### WSBA Website

www.wasba.org

# MARCH

## TED SWENSON

## Agenda

3/10/06

### Welcome!

Say hello to all of the bee class members and encourage them to come back each month. Networking is a wonderful thing and in this day and age a must for beekeepers.

### Business Meeting Night

### Reports:

The Secretary's Report - Linda  
The Treasurer's Report - Ky  
Joy in Beekeeping Report - Joe  
Fair Reports Call for a new Fair Coordinator  
Inland Beemail Report - Dave  
WSBA Report - Jerry  
Four Corner Bee Reports - Bob and Jerry

### Old Business:

IEBA Charter/Constitution Update - Nothing to report.  
North Yard Report - Bob Arnold  
Fair Coordinator  
Joy in Beekeeping  
2006 Program - adoption

### New Business:

Meeting Adjourned



## Hive Care

### March:

**The Bees.** This is the month when colonies can die of starvation. However, if you fed them plenty of sugar syrup in the autumn this should not happen. With the days growing longer, the queen steadily increases her rate of egg laying. More brood means more food consumed. The drones begin to appear. The bees will continue to consume honey stores, and may find some early sources of pollen, such as pussywillow.

**The Beekeeper.** Early in the month, on a nice mild day, and when there is no wind and bees are flying, you can have a quick peek inside your hive. It's best not to remove the frames unless the temperatures really come up. Just have a look-see under the cover. If you do not see any sealed honey in the top frames, you may need to begin some emergency feeding. Lift up on the hive body to judge the remaining stores. But remember, once you start, you should not stop until they are bringing in their own food supplies. You may also wish to put on pollen substitute to aid the building brood nest.

-adapted from

www.backyardbeekeepers.com

(Continued from page 6)

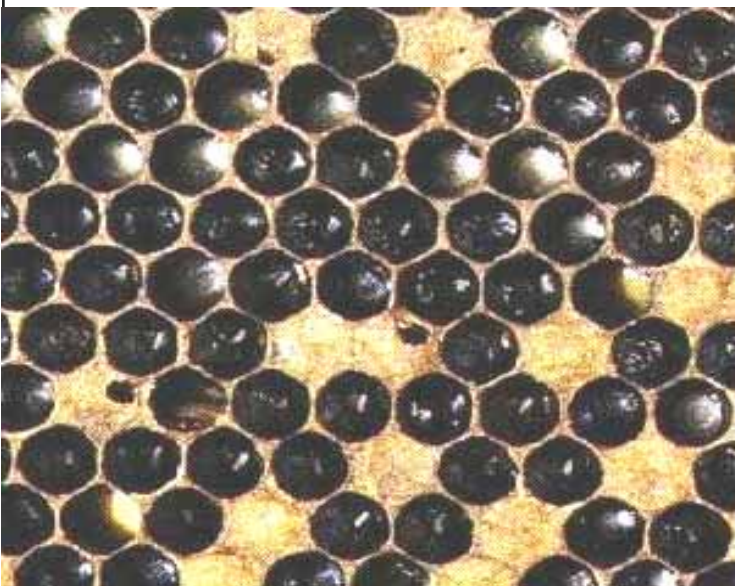
is not a sign of your inability to keep bees. It is an essential part of keeping your hives strong and healthy.

### American Foulbrood

Early March we always get signs of hive awakening with the first pollen being brought to the hive. The bees will begin raising brood in earnest. Along with brood rearing will also be increasing risk for the hive to develop American Foulbrood (AFB). This disease is permanent once it gets into your colony unless you have bees that are effective in cleaning out the infected cells. The spores that remain after the brood dies cling firmly to the cell walls.

Hygienic bees have been demonstrated to be effective at cleaning the spores from the hive. More and more of our purchased queens show excellent hygienic behavior in their worker progeny.

New approved medications (Tylan) for AFB are available and are quite effective in removing the disease symptoms



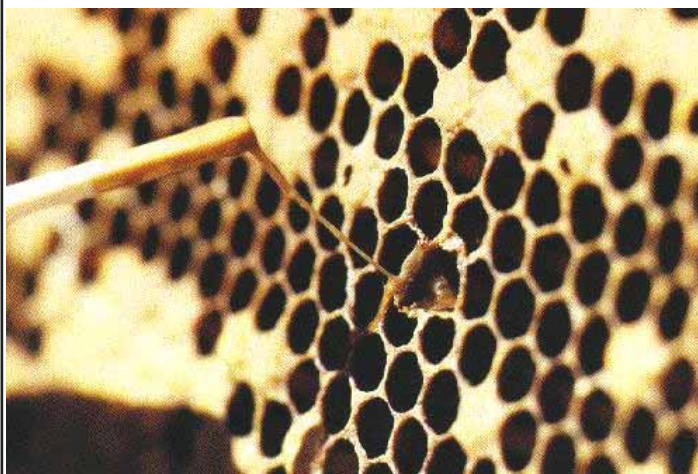
AFB Infected Comb



and making the brood healthy again. However, unless the bees are effective in removing diseased larva the symptoms may be gone but the infectious spores remain to re-infect your hive or other hives at a later time.

The best practice in treatment of AFB is burning infected comb and carefully cleaning boxes, tops and bottoms and scorching all bee contact surfaces with a propane torch. The bees can be saved by shaking them into a cardboard box with some feed and leaving them for a day or so in a dark cold place and then allowing them some flight activity. The bees then can be placed on clean uninfected drawn comb or foundation. The infected combs should be immediately placed in a location that bees cannot get to for later burning or burned immediately. **Do not put the comb in the garbage as most eventually appears in an open transfer station or sanitary disposal location for some period where access to honey bee robbing is assured.** Putting the combs in a sealed plastic garbage bag for later burning has worked well for me.

The advantage of burning is that you get new comb and you end the disease cycle. Treating the colony with Tylan will clean up the symptoms very nicely. However, the comb will still have infective spores that will get to all of your hives through bee or by human transfer. All of your hives then become at increased risk to coming down with AFB. This is a story that has been realized by so many beekeepers including myself. Burning is by far the most effective, economic and satisfying method of controlling AFB.



Reproduced by permission of the Department of Primary Industries and Fisheries, Queensland Australia

## National Honey Board Funding Six Production Research Proposals in 2006

For Further Information, Contact:  
Lisa Jager, National Honey Board  
lisa@nhb.org

National Honey Board  
390 Lashley Street  
Longmont, CO 80501  
Phone (800) 553-7162  
Fax (303) 776-1177

FOR IMMEDIATE RELEASE  
February 13, 2006

Longmont, Colo. – The National Honey Board (NHB) will fund six production research projects in 2006 to study a variety of colony health issues. Funding for the projects totals \$63,475.

NHB began funding production research projects in 2004 to help beekeepers maintain colony health, without adversely affecting their ability to produce quality honey. Since 2004, NHB has funded seven such projects with funding totaling \$135,877.

Following is a list of the 2006 projects, followed by the researcher and university or research lab that submitted the research proposal:

- 1.) Hygienic Removal by Honey Bees of Reproductive parasitic Varroa Mites, H. Glenn Hall, Ph.D., University of Florida.
- 2.) Is Propolis Effective Against American Foulbrood and Varroa Destructor?, Marla Spivak, University of Minnesota.
- 3.) Environmental and Genetic Traits of Bees that Resist Disease and Increase Productivity, Jay Evans and Jeff Pettis, Research Entomologists, USDA-ARS Bee Research Laboratory.
- 4.) Co-encapsulation of attractants to Improve Biocontrol of Varroa in Honey Bee Hives, Kelly Cartwright, Ph.D., Agricultural Research Initiatives, Inc.
- 5.) Investigating Bacillus thuringiensis CRYIII toxin for the biological control of Small Hive Beetle (Aethina tumida) Audrey Sheridan, Mississippi State University.
- 6.) Varroa mite control using mineral oil and essential oils in honey bee colonies, Jeff Pettis, USDA-ARS Bee Research Laboratory.

For more information on the research projects, contact Charlotte Jordan, NHB project manager at (800) 553-7162.

NHB conducts research, advertising and promotion programs to help maintain and expand domestic and foreign markets for honey. These programs are funded by an assessment of one cent per pound on domestic and imported honey.

## MORE NATIONAL HONEY BOARD NEWS

### **\*Chef Tony Marotta Featured Chef on Honey.com\***

Chef Tony Marotta of the Flying Fish Café at Disney's Board-Walk Resort is currently the featured chef on NHB's www.honey.com web site. In the fall of 2004 and 2005, Tony took on an extra-curricular assignment to create a honey-enhanced recipe on behalf of NHB to feature during WALT DISNEY WORLD's Epcot Wine & Food Festival. One of a group of Disney chefs attending a NHB-hosted beekeeping tour, Tony returned inspired.

His renewed appreciation for honey's versatility and varietal subtleties can be sampled in his 2004 Wine & Food Festival recipe for Lamb Chops with Asian Pear and Kiwi Salsa with Sweet Potato Purée. In his own words, "Honey has always been one of my favorite ingredients to add flavor and sweetness. It's not only natural, but adds a special complexity to the flavor of the particular application."

<http://www.honey.com/foodserv/chef/marotta.html>

### **\*Honey and the Olympics: Panna Cotta Anyone?\***

\*Speedskater (and Honey User) Rodriguez Competes in Olympics\* Turin, Italy, is located in Italy's northwest Piedmont region and is known for its fine foods, including honey. Popular varieties include Acacia (the type of honey produced most widely in Piedmont), chestnut, sunflower, dandelion and linden. Chestnut honey was among the traditional Turin products provided to competitors, coaches and journalists by the Italian organization Turin Province Basket of Goods.

Piedmont is reportedly the birthplace of the popular Italian dessert "panna cotta", which means "sweet cream" in Italian. Its primary ingredients include cream and sugar, however, many panna cotta recipes call for honey.

Piedmont also is known as the birthplace of the "slow food movement."

The movement's founder is Carlo Petrini, who is from the Piedmont region. Petrini founded the movement in 1986 to celebrate the enjoyment of food and wine. Slow Food U.S.A.'s web site says the group is "an educational organization dedicated to the revival of the kitchen and the table as centers of pleasure, culture and community; and to the invigoration of regional, seasonal culinary traditions."

Competing in the 2006 Olympics is speedskater and current World Sprint Champion Jennifer Rodriguez. Rodriguez is the first Latina speedskating champion and the first Cuban-American to win an Olympic medal. In 2005, Rodriguez was one of the Latin American athletes touting the benefits of honey in NHB's Hispanic honey public relations program. Let's hope she's using honey during her Olympic training sessions!



**Inland Empire  
Beekeepers  
Association**

**Next Meeting:  
Friday February 10  
7:00 PM Social Time  
7:30 Meeting**

**T**he Inland Empire Beekeepers Association (IEBA) meets the 2nd Friday of every month at the Spokane County Ag Extension office by the County Fairgrounds, at 222 N. Havana. The association is affiliated with the Washington State Beekeepers Association (WSBA). IEBA membership dues are \$5.00 for an individual or \$10.00 for the entire family. This includes your receiving the *Inland Beemail*, which is published by the association every month.

## *INLAND BEEMAIL*

Dave Bearden, Editor  
5319 N Simpson Rd  
Otis Orchards  
WA 99027

Phone: (509) 226-5231  
email: [nmsuaggie@icehouse.net](mailto:nmsuaggie@icehouse.net)

Send To:

### **New: IEBA 2004 & 2005 CD Now Available**

For the cost of \$5.00, you can now obtain a CD containing all of the 2004 & 2005 *Inland Beemails* in PDF format, as well as a good number of pictures that were taken at various club activities. This is a great resource for all the new beekeepers as many excellent management articles were discussed in the past 2 years. You can order your 2004/2005 CD by sending an E-Mail to [seilerbees@att.net](mailto:seilerbees@att.net) or calling Frank at (509) 991-3019 and your CD will be waiting for you at the next meeting of the IEBA. All proceeds are to benefit the IEBA in expanding its educational programs.



I hope to build up the CD and reissue it every year with the latest information. Think of it as an IEBA library in progress. System requirements are fairly minimal and will work well for both Windows and Linux users.

*Frank Seiler*

