



# INLAND BEEEMAIL

Monthly newsletter of the Inland Empire Beekeepers Association

Volume 13, Issue 9 — September 2008 — [www.inlandbeemail.com](http://www.inlandbeemail.com)

Presidents  
Corner:

## President's Corner:

August and September seem to be more about state fairs than beekeeping but these two months are very important for you and your bees. **Our next meeting is THURSDAY, 4 SEPTEMBER at the FAIR GROUNDS!**

Our focus will be the fairs so read your bee mail close for the beekeeping things that need to be done. We are all quickly running out of time for getting ready for winter snow. Hopefully you have pulled your honey and the hives are down to two deeps. If you are one of those that use chemical treatments for mites you need to get in done soon. You do not want the mite treatments or mites to adversely impact your winter bee production. Over the next several weeks the bees will start raising winter bees (sometimes called fat bees). These workers are very important, as they will have to get the hive/queen through the winter months without any new workers until Feb/Mar. In order for the hives to raise these winter workers they need good amounts of pollen and nectar. Watch your hives to see that they are storing lots of pollen, hopefully lots of different types. My pollen traps showed five different types of pollen coming in this week. That is great for this time of year. Hopefully it will continue. The knapweed is still producing which is great; maybe we will not have to feed syrup to increase hive weight this year. (Just syrup w/ fumadil for nosema treatment.) Our class is October will emphasize winterizing your hives. It would be a good idea to read up on winterizing hives before the class. Winter might come early this year. Also, if you have a weak hive talk to your mentor and discuss options for getting it through winter.

It seems that most new beekeepers lose their hives the first couple of winters. That can be very discouraging. Start thinking winter now and you might have a better chance of having bees in the spring.

See you at the fairs.

## Fair Time!

### Agenda

9/4/08

### Welcome!

FOCUS -----State FAIR-----

### Reports:

The Secretary's Report – Linda  
The Treasurer's Report - Julie  
Fair Reports – see below  
WSBA Report  
Four Corner Bee Report  
How is your honey flow?

### Old Business:



## Chinese disease stalks orange groves of Florida

Real estate is not the only industry in Florida to be suffering from an economic blight. While the Sunshine State ranks as one of the foreclosure capitals of America, its huge citrus fruit industry is fighting a disease that threatens to devastate the orange business within a decade.

The United States is the world's second-biggest orange producer, after Brazil, and Florida is the heart of the industry. Last year, according to the University of Florida, the state produced 15.3 million tonnes of oranges, grapefruits, tangerines and limes, grown on 530,000 acres of farmland, in a business worth \$9 billion.

Three years ago, the alarm bells began to ring when a farmer in Florida discovered that part of his orange grove had been infected by huanglongbing, a deadly bacterial citrus disease that originated in China. Huanglongbing (HLB) means “yellow shoot disease” and is called “greening” in the West.

According to Ron Bransky, a plant pathologist at the University of Florida's citrus research and education centre: “The disease is now widespread across the state. All counties in Florida with commercial citrus growers have got it. Once a tree is infected, it can take two or three years for it to show symptoms. At the moment we are trying to find out through surveys how much it has reduced production. We don't really know.

“Like any plant disease, you have to manage it, but at the moment there is no cure. Part of our strategy is that we recommend growers to dig up the infected trees and get rid of them.”

The pathogen affects productivity. It makes the oranges smaller, green, bitter and lop-sided. While an infected fruit is not harmful if consumed, few fruit companies are prepared to buy such oranges. The tree dies within a few years of being infected.

## Scientists Discover New Virus Invading US Honeybees

Aberdeen Proving Ground, MD — Scientists at the Edgewood Chemical Biological Center (ECBC), located in Edgewood, MD, working with scientists at the University of Montana and industry partners Bee Alert Technology, Inc. and BVS, Inc. have discovered in U.S. honeybees a virus only before identified in European honeybees.

The invading bee virus newly discovered in the U.S. is called Varroa Destructor Virus -1 (VDV-1). First definitively identified in Europe in 2006, VDV-1 is carried by both honeybees and the tiny varroa mites that affect them. VDV-1 is related to a family of paralytic viruses that causes a breakdown of some membranes. In silkworms the virus causes flaccid disease, which causes the worms to digest themselves internally.

The virus was discovered using a technology developed for battlefield detection of viruses. This technology, called Integrated Virus Detection System / Proteomic Mass Spectrometry, reveals virus by size and peptide information contained in a sample and compares that information against known genetic sequences. This approach may provide important clues to scientists around the world working to find the cause of Colony Collapse Disorder -- a mysterious malady that has caused rapid depopulation of beehives around the globe.

This is the first detection of this virus in North America and will allow beekeepers in the U.S. the possibility of early control and quarantine of affected colonies.

***For more information, please contact Joan Michel (410.436.3610; 410.652.3912 – mobile).***

## Fall Requeening

By Bob Arnold, IEBA  
Program  
Chair

Fall is commonly used to describe the month after the main honey flow which occurs in June and July here in the Spokane area. Fall requeening is best not done in the fall (September or October) as there is too little time to recover from a mistake. It is best done in August as there is sufficient time for the new queen to get laying providing lots of young bees for winter and you can still recover from a unsuccessful queen introduction.

Why is fall requeening desirable? Purchased queens from California in April and May are often poorly mated and supercede during the month they are introduced. However, queens purchased from California in the June, July or August are usually mated well as weather in California readily permits necessary queen mating flights. The queens are also plentiful and often for a smaller price. The most important reason is to replace your queen before it goes through its second winter. Often second winter queens will survive the second winter only to fail in March or April when it is impossible to introduce another queen.

It is important when requeening in the fall that you have some method to keep the old queen laying until you have verified the new queen has been accepted and is laying properly. This is very important since little time is available if the introduced queen is not accepted and you can risk losing the entire hive if the queen is not accepted. It is best if you want to do requeening this time of year to do it as early in the month of August that you can. You still have time to recover if something goes wrong. Plus you still have some trickle of nectar coming in which is a big help in getting a queen started and the first round of brood laid.

The general technique that I have discussed in prior meetings is the method that I prefer. You

need to have a queen excluder and a double screen board and the new queen the day you prepare the hive. Remove the honey from the hive, preferably a day before you prepare the hive to receive the new queen.



Find all of the brood and place half of the brood in each of the two hive bodies. Shake all of

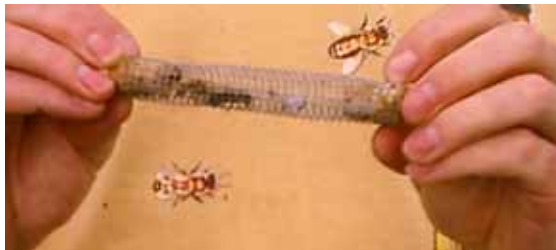
the bees down to the lower hive body and place the queen excluder on top of the bottom hive body. Put the top hive body back on top of the queen excluder. After a few hours the bees will have re-populated both boxes with the queen below the excluder. Remove the excluder and replace it with the double screen board. This board will have an entrance for the upper box. I like to face the upper hive body entrance opposite in direction to the lower original entrance of the bottom board.

This manipulation leaves you with two hives on one stand. The top hive is queenless and will start to raise a queen unless you introduce one. This will occur often the same day you perform the manipulation—other hives may take one or two days. In any case the bees in the top box will begin supercedure cells. It is best to introduce your new queen at the same time you put the double screen board on the hive.

For added insurance if you have a frame feeder put on a heavy sugar syrup feed on the top hive (2 parts sugar to 1 part water). This is best done for the period of time the bees are getting to know the queen until she is out of the cage and laying—a week to 10 days. The queen can be introduced in the cage she was shipped in. You must make sure she stays in the cage for a period of at least 2 days and preferably 3 days.

(Continued from page 3)

I prefer putting the queen into my own screen cage which is simply fashioned out of some 1/8" hardware cloth of dimensions 2.75" x 4" and formed on a 3/4" x 3/8" stick.



One end of the cage the screen is bent shut and the side soldered. A plug is fashioned out of the forming stick to plug the hole in the other end of the cage. The queen is herded into the cage by placing the mailer cage with the open cork hole up to the entrance to the screen cage. Gently blow on the queen and she will eventually find the new cage entrance and crawl in. Carefully place the plug in the cage. Do this in an enclosed area with a window. If the queen gets loose she will fly to the window and you can pick her up by the wing and place in the cage opening.

Place the mailer/cage in the area of the upper brood chamber where there is brood and a good supply of bees. If you are using the mailer cage do not pull the cork on the candy end. It is best to leave the mailer/cage in the hive for 3 days and then release the queen onto the comb. Before releasing the queen check carefully for any eggs or queen cell starts. If you find eggs you have a queen in the box and you need to start over. Destroy any queen cell starts—look very carefully as sometimes hives will kill an introduced queen if they have queen cells started before you introduce the queen. You can release the queen from the mailer by gently removing the screen off the cage or pulling the plug on the end opposite the candy and letting the queen walk out onto the comb. With the cage just pull out the plug and lay the cage on the comb and wait for the queen to crawl out. Watch the queen

carefully, if any bee jumps on her and attempts to sting her grab her by the wing and put her back into the cage. It is normal for the bees to climb on top of the queen. Usually they will be very aggressive with a queen they don't want by jumping her and trying to sting her almost the second she gets free of the cage. They will probably be trying to sting her while she is in the cage so check it first.

Once the queen has crawled around the comb a bit and they do not seem to want to kill her you can place the comb back into the hive and shut it up. It is best to leave the hive alone for at least one week. Check for eggs after a week. If the queen has been accepted then you should wait and see the queen perform properly (no drone brood in worker cells and a good solid laying pattern) before doing anything to the old queen below. After 3 weeks of egg laying if the queen above is good then you can find and kill the old queen and simply pull the double screen from between the two hive bodies. This will work even in a nectar dearth as the two hives seem to be one. If you prefer, however, replace the double screen with newspaper.

This method takes about 4 to 5 weeks so start early in August. You still need to get all of your medications on and feed for wintering. This should leave the month of September and a week or two in October to finish. If the introduced queen is not accepted then just combine the two hives or redo the process with a new queen.

The details of all of this eliminate a lot of problems. If you change anything you may discover why I do it this way! Any questions please do ask me. Good luck.

**IEBA - Meeting Minutes August****Linda Carney, Secretary**

August 10, 2008

President Ted Swenson pulled everyone away from stuffing straw bags to call our picnic meeting to order. (Actually he was not going to start the meeting or serve food until the straws were all packed—so we all worked very, very fast)

The secretary's minutes were accepted as published in the Inland Beemail. However, it is noted that the checking and savings account numbers were reversed in the beemail.

The Treasurer's reported was given by the palm reader, Julie Watts. She read \$8,094.24 in checking and \$1,880.93 in savings. The report was accepted.

**4 corner reports**

South- Bill Watts stated that his bees are okay  
East – A beekeeper extracting 2 supers from one hive. The honey is very light.

West – No report

North – Bob Arnold's bees are happy. He is getting light honey also.

A note \* If the pollen is gray this time of year or in the fall, the pollen is knapweed.

New carnolians will be grafted for the IEBA beeyard by WSU. Ted Swenson and Jerry Tate will pick them up for the association.

Kelly McSheehy and Jack Knox told everyone who volunteered for the North Idaho fair that the tickets will be at *will call* (blue gate)

Be sure and take your business cards for both fairs.

**The Spokane Fair booth will be set up on Tuesday, Sept. 2, 2008 at 5pm. The monthly meeting will be on Thursday, Sept. 4<sup>th</sup> at the Interstate Fairgrounds.**

Tickets will be given out to the volunteers for the booths at that time. If anyone is unable to make the meeting, the tickets will be at the Fair's Office which is located to the left of the front gate, or as Mr. Carney would say it is north of the Front West Gate. (Go to the main entrance and it is the building along the fence to the left of the main gate)

Yes, we need many more volunteers to cover the enlarged area we have been given. 4 people will allow only one person per side. Please contact Linda or Roger Carney to schedule a time to spend with your friends, meet new and exciting people, talk to people who know even less than you do about bees, try to find the queen without the help of an 8 year old, or just to help your association. (Remember, the ticket gets you into the FAIR, you can see the sights and eat the food all day long if you want, just spend a few hours in our booth)

Our meeting was adjourned.

**QUEEN DROWNS!!!!**

No signs of life jacket found!!

A woman calling herself Beverly Bailey told this reporter, and others, the gruesome story. Beverly discovered the body-- just floating. She appeared shocked and shaken by the discovery. When questioned she could not provide any answers. She only had questions.

Where were the guards?

Why was the Queen getting her own water?

What was she doing outside?

Where were her attendants?

Why did she not swim to safety?

Was it an accident, suicide, or foul play??

**Inquiring minds want to know.**

**Buckingham Palace had no comment.**

Submitted by your phantom reporter-Elsie

## Northwest Corner Beekeepers Fall Conference 2008

### Red Lion, Vancouver, Washington

### October 16, 17, 18

Attendee's Last Name \_\_\_\_\_ First Name \_\_\_\_\_ MI \_\_\_\_\_ Registration Date \_\_\_\_\_

Company Name (if applicable) \_\_\_\_\_

Home Phone----- \_\_\_\_\_ Work Phone \_\_\_\_\_

Mailing or Street Address \_\_\_\_\_ Cell Phone \_\_\_\_\_

\_\_\_\_\_ e-mail \_\_\_\_\_

City \_\_\_\_\_ State/Province \_\_\_\_\_ Zip Code \_\_\_\_\_

Name of family member attending \_\_\_\_\_

Event	Registration for Individual Days	Full Conference Registration
Thursday Night hospitality room	complimentary	complimentary
Friday Conference Only @ \$50 Family registration fee @ \$70	\$	XXXXXXXXXXXXXXXXXX
Sat. Conference Only individual @ \$50 Fam- ily registration fee @ \$70	\$	XXXXXXXXXXXXXXXXXX
Full Conference individual @ \$90 Family registration fee @ \$115	XXXXXXXXXXXXXXXXXXXXXXXXXXXXXXXXXX XXXXXXXXXXXXXXXXXXXXXXXXXXXXXXXXXX	\$
Friday Noon Lunch @ \$16	\$	\$
Friday Evening Banquet @ \$30	\$	\$
Saturday Noon Lunch @ \$16	\$	\$
<b>Total</b>	\$	\$

If exhibiting, num. of tables @\$25 \_\_\_\_\_

Total plus exhibitor's table fee \$ \_\_\_\_\_

**Make checks payable to WSBA.**  
**Mail completed registration form and payment to: Paul Hosticka, 517 S. Touchet Rd, Dayton, WA 99328**  
**Hotel reservations are not included in these rates. Make your reservations at the Red Lion Inn, (800) 733-5466 and ask for the Beekeepers Fall Conference special room rate. You must make sure that they know you are attending the Northwest Corner Beekeepers Fall Conference when you make reservations to get the bargain rate.**

# Classified Ads

**Tate's Honey Farm** has all of your extracting and packaging needs as well as spring packages and queens. Woodenware for all your winter projects and spring needs. Shop hours are 8:30—2:00 every Saturday at E. 8900 Maringo, Millwood. Contact us at 509-924-6669 or online at [www.tateshoneyfarm.com](http://www.tateshoneyfarm.com)

## BEEBOXES BY LEE

Woodenware, standard or custom orders, IPM bottom boards, Hive top feeders, etc, select lumber. Order now to be ready for spring. Lee Berchtold  
(208) 687-1300

## NUC's - For Sale

Now taking orders for 08 Nucs 4.9mm and standard cell sizes available please call for prices. Contact Travis Sammons at 509-928-4326 / 509-991-3758

## Miller's Homestead

**Jim and Jenine Miller**

Cheney, WA 1-509-299-9085  
14606 Stangland Rd., Cheney. Look at our web site for prices on all available items.  
[www.millershomestead.com](http://www.millershomestead.com)

## NUC's For Sale

**RUSSIAN or KONA Queens**

You Get:

### Proven Queen

- ◆ 3 frames brood
- ◆ 1 frame honey
- ◆ 1 frame honey/empty comb
- ◆ 3 lbs. of bees

Chattaroy Hills Honey Farm  
Ted Swenson (509)220-0185

**Available: 21 or 28 April**

Limited #, First Come First Serve



**Beeboxes, frames, foundation, tools and equipment**

**open M-S 9-5:30**

**East Farms Feed**

21518 E. Gilbert  
Otis Orchards, Wash. 99027  
509.928.3616

## IEBA Contacts

### President

Ted Swenson  
(509) 238-6489  
tedandbarb@icehouse.net

### Vice President

Daren L. Mumau  
509-926-4177  
dmuma@wildblue.net

### Treasurer

Julie Watts  
(509) 448-1141  
crittercrapfarm@netzero.net

### Secretary

Linda Carney  
509-448-0417  
tlclimo@yahoo.com

### Newsletter Editor

Dave Bearden  
509-226-5231  
nmsuaggie@icehouse.net

### Associate Editor

Frank Seiler  
509-991-3019  
seilerbees@msn.com

### Spokane County Fair Chairman

Linda and Rodger Carney  
509-448-0417  
tlclimo@yahoo.com

### WSU County Extension Liaison

Joan Nolan  
509-924-3652  
joan1422@msn.com

### North Idaho State Fair Chairman

Kelly McSheehy  
(208) 687-6016  
McSheehy@aol.com

### Web Master

John Pierce  
509-242-2035  
admin@bee-mail.org

### WSBA at Large Delegate, Technical Advisory Program, & IEBA Bee Class Instructor

Jim Miller  
509-299-9085  
jandj@cet.com

### IEBA Program Chair & WSBA Area 6 Delegate

Bob Arnold  
509-276-2399  
sar3140@aol.com

### Joy in Beekeeping

Al Dwinell - Chair  
Julie Watts  
Dale Edwards

### IEBA Historian

Jon Burcham  
509-928-4829

### IEBA Website

[www.inlandbeemail.com](http://www.inlandbeemail.com)

### WSBA Website

[www.wasba.org](http://www.wasba.org)

Hive Care :

## September

Most of us have our supers pulled by now and are thinking about our fall management. Whatever strategy you implement, now is the time to start fall mite treatments.

Be sure to adhere closely to the manufacturers recommendations for all chemical treatments. Remember that many treatments are temperature dependant and successful treatment is easier early in the fall. Improper use increases the chances of mites becoming resistant and also increases the chances of contaminating your comb with pesticides.

Evaluate your hives and their potential for overwintering. Combine those that are weak. Evaluate food stores and begin a feeding program for light colonies as there is little nectar coming in now. A 2:1 sugar/water solution is recommended for fall feeding.

Robbing and yellow jackets are of particular concern. Reduce your entrances to prevent robbing if possible, trap and destroy yellow jackets and paper wasps that are threatening you bees.

And best of all, enjoy the fruits of your labors as you extract and bottle and share in the county fairs in our region.



**Inland Empire  
Beekeepers  
Association**

Next Meeting:  
September 12

**September Meeting  
THURSDAY 9/4  
IEBA Booth Spokane  
County Fairgrounds**

# INLAND BEEMAIL

Dave Bearden, Editor  
5319 N Simpson Rd  
Otis Orchards  
WA 99027

Phone: (509) 226-5231  
email: [nmsuaggie@icehouse.net](mailto:nmsuaggie@icehouse.net)

Send To:

## IEBA

### Birthdays & Anniversaries

#### SEPTEMBER BIRTHDAYS

- 10 - Sandy Martello
- 11 - Clara Ross
- 21 - Ed Banton
- 21 - Loretta Evans
- 24 - Sharon Mumau
- 26 - Heather Spock
- 28 - Bill Spock

#### SEPTEMBER ANNIVERSARIES

- 3 - Peter & Nanci Ice
- 27 - Jim & Jenine Miller

## *Beekeeping Calendar - Bob Arnold*

### September

Check for AFB. Check mite fall counts. When lots of brood hatches mite fall counts may be high. Check for signs of deformed wing virus—feed heavily if many bees with DWV are present, check mite falls with your medications—it might not be working and you will still have time to try another material. Replace any queens that may be poor with a nuc or mated queen. Introduce with feed on the colony. Feed a pollen substitute if there are no pollen stores. Feed 1:1 syrup if you are trying to build bees and 2:1 if you are trying to feed stores. Mix Fumigillen into your 2:1 feed, feeding about 2 gallons of feed for winter. Get all of the feed on by the end of September. Bees must have a cluster of at least 8" diameter to survive winter and minimum honey stores of 9 frames Russian bees even need less and can have a smaller cluster. Bees that are eager beavers on brood rearing will need an additional 3 full frames of honey.