



INLAND BEEEMAIL

Monthly newsletter of the Inland Empire Beekeepers Association

Volume 14, Issue 4 — April 2009 — www.inlandbeemail.com

Presidents
Corner:

President's Corner:

It is good to finally be able to get into the hives and see how they are doing. Winter losses are always disappointing but seeing the hives that made it in good shape is heart warming. If you use dry feeders now is the time to put them out. My bees are all over them. I can't wait for dandelions.

I need to address an article that was in last month's beemail that has generated a lot of comments from association members. The article was titled 'IEBA Basic Beekeeping Class Update' and was authored by Jim and Jenine Miller. In the article there was a statement that 'last year the officers of IEBA stated that they did not want a waiting list' in reference to an overflow of people wanting to take the basic beekeeping class. The association officers last year are the same as this year and none of us remembers those comments. In addition, none of us was approached by Jim or Jenine to discuss what to do with the overflow. Several members of the education committee and some of the association officers had been discussing the need for another class similar to the one that we conducted last year. That discussion is now mute due to the two classes that Jim and Jenine are having at their house. Basically, Jim and Jenine set up and sponsored these two classes on their own. The IEBA was not approached by any persons to be authorized as IEBA representatives to teach off the premises of the WSU Extension Office. The students that are attending those classes must understand that they are not IEBA sponsored classes. In addition, the students will not be "certified" beekeepers as required by Spokane City (and possibly Spokane Valley) municipal code for keeping bees in the

city limits unless they take the Washington State Beekeepers Apprentice Beekeepers Certification test.

All students of this years IEBA class need to know that they too are not "certified" beekeepers as required by Spokane City (and possibly Spokane Valley) municipal code for keeping bees in the city limits. To become certified each beekeeper will need to take the Washington State Beekeepers Apprentice Beekeepers Certification test. Send me an email and I will start that process or see me at the monthly IEBA meeting. Email: president@inlandbeemail.com

The IEBA bee yard came through the winter in pretty good shape. We have 14 hives that survived a severe case of nosema apis. The hives are heavily decorated with bee droppings and look nasty. But the bees inside look good with lots of shiny new bees. Two of the hives are strong and will be easy and early splits. Three of the new (last fall) WSU and one of the third generation queens came through in good shape. They will improve the genetics in our yard and if they pass muster with good honey crops and hygienic behavior we will have some good drone mothers and/or queen mothers for grafting. Three of the dead outs were full of bees that acted like Italians. They had huge clusters that ate all the stored food and therefore starved. I am glad these hives died; we do not need their genes in the bee yard. The other dead outs included freeze kills and the ever present 'unknown cause'. The good news is no apparent CCD kills.

Bob Arnold and crew have developed a schedule for the bee yard classes. The first is the weekend after package day. Prior to that we will need to work the hives and get them ready, and cleaned up, for the students.

(Continued on page 2)

Once again, Darren Muma and Bill Watts will be giving a package installation class at the extension office (parking lot) on package day, April 18th. Everyone is invited. Darren and Bill will show you how to install a package and what to expect the first week. In addition, they will have one of our singles so that they can show students what a honey bee looks like, what eggs, larva, capped brood, and capped honey looks like. Maybe they will even find the queen. Two sessions, one at 12:00 and the next at 1:00 PM, times subject to change. Final times will be announced at the bee meeting.

There will be two articles in the beemail discussing T shirts, hats and logos. Please find them and think about which one you like. We will vote on some of them. We will also vote on a honey container label competition that we mentioned last month. Lots of good stuff going on in the association.

Hope to see everyone on Friday.



Dear Fellow IEBA Members,

It was an honor and privilege, and, yes, even a delightful surprise to receive the Walt Peterson 2009 Joy in Beekeeping award. Be assured that the money awarded will be spent wisely to obtain much needed equipment to help me care for the bees and learn more about them. To the IEBA and Joy in Beekeeping committee I send my heartfelt THANK YOU.

Yours truly in the love of bees,

Joan Nolan



Agenda

4/10/09

Welcome!

Reports:

- The Secretary's Report - Linda
- The Treasurer's Report - Julie
- Fair Reports N/A
- WSBA Report
- Joy in Beekeeping Report
- IEBA Bee Yard Report
- Education Committee Report
- Four Corner Bee Stories

Old Business:

- 2009 Non-Profit Corporation License Renewal has been filed
- 2009 Letter of Non-Discrimination has been sent to WSU Extension Office
- WA State Sales and B&O taxes have been filed

New Business:

- IEBA T Shirts and Baseball Caps – see beemail article
- IEBA Honey container labels – see beemail article

Meeting Adjourned

Part 1: IEBA Apiary Plans for this year presented by Bob Arnold

Part 2: Diagnostic Lab Function as part of the Colony Health Study presented by Kirsten Northfield from WSU. Also: Hive Sampling Methods and Data Sheet

Part 3: Early Spring Management by Bob Arnold



IEBA - Meeting Minutes March Linda Carney, Secretary

March 13, 2009

The meeting was called to order by President Ted Swenson. He quickly introduced the Liberty FFA Agricultural Issues Team. This group of young people presented a debate for and against the benefits of the honey bee as a pollinator. Our meeting was short so we could enjoy the presentation and make comments to help the team in future presentations (see pictures below).



The **minutes** from the February meeting, taken by the tremendous Treasurer, Julie Watts, were accepted as published in the Inland BeeMail.

Then the **Treasurer's report** was given by Julie. We currently have \$11,078.33 in checking and \$1,884.71 in savings. Her report was accepted as presented.

There were no **Fair Reports**

There was no **Washington State Beekeepers Assoc. report**.

WSU has scheduled a Field Day on June 13th. More information will be available about this fantastic opportunity later. The Field Day offers a large array of venues for the beekeeper with a lot of hands on

There was also no **4 Corners Report**

Okay, get ready for the announcement of the Beekeeper of the Year for 2009. The Joy of Beekeeping Award's newest BEEKEEPER OF THE YEAR IS (dah, dah!!) Joan Nolan !!! At first she was not sure why her name was mentioned. Then as she became aware of the announcement and that she was selected for 2009 her face was first shock-- and then awe. So many talents, so much grace, so much to offer, always a winning smile and attitude and always there to pitch in. These are just a few of her assets. Yeah for 2009!! Go Joan!!

President Ted Swenson announced that next month we will have a "honey label logo" contest. Be sure and inquire about the project, it's open to anyone. Also, for those of you who have a great imagination or just a good common sense answer, we are looking for a way to display the Association's winning ribbons. Members are also looking into hats and other items for the association which can be talked about at the next meeting.

The guest speaker at next month's meeting will be Kirsten from the new bee lab. She is responsible for diagnostic research and has opened many doors of knowledge for a better understanding of our bees. We locally now have the option to have our own bees looked at for the general health of our hives. She can diagnose the problems within the bee and return the information to the beekeeper so he can act upon the information. It should be a very informative and exciting presentation.

Our meeting was adjourned.

IEBA Caps and T-Shirts

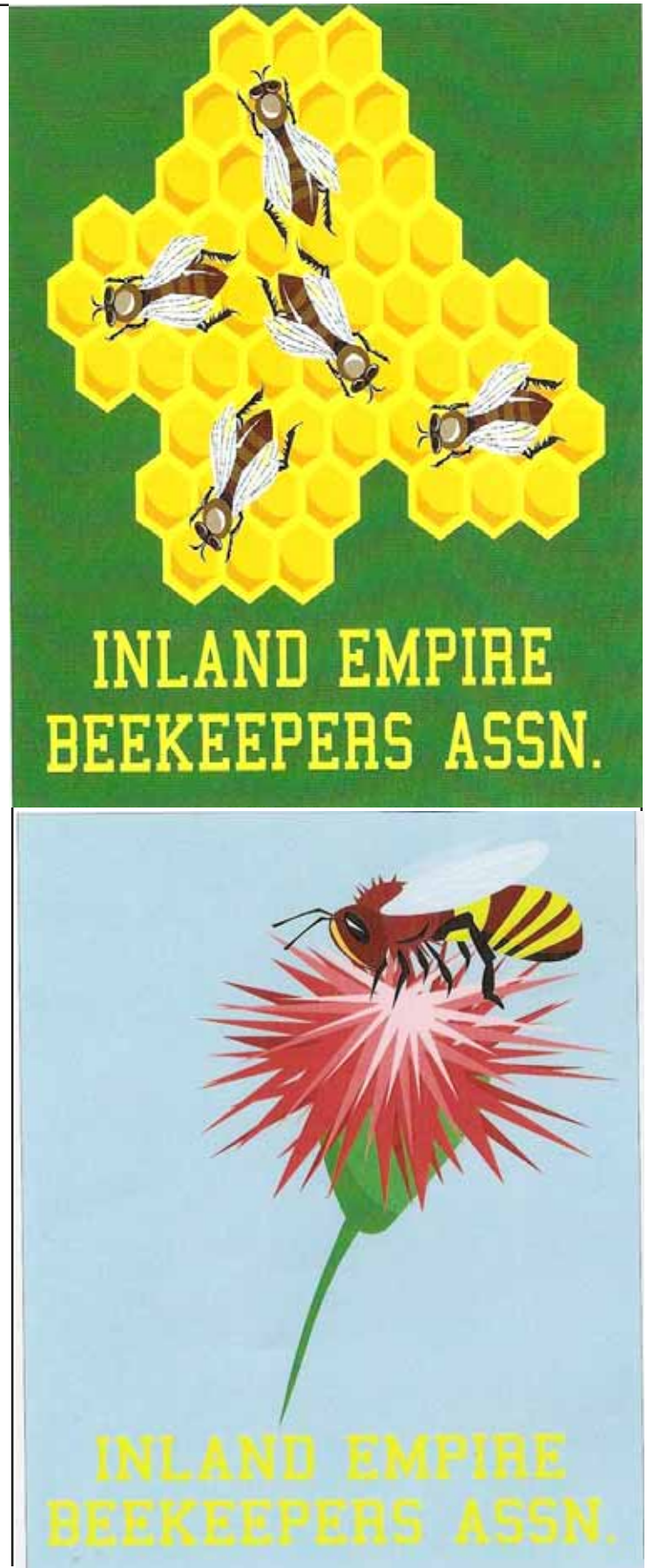
For a couple of years now various members of the association have expressed a desire for baseball caps and T-shirts with an IEBA logo. Diane Burnham has done the research for us and has two great options for the membership to consider. Please inspect the two logos and determine which you like best. There is no obligation to buy. We want to identify one label for the association. Once we identify our favorite we will need to approve the funds to have the design set up at the Design Center. Once that is done, anyone can go in and have the logo put on their caps or shirts etc. The association will take individual orders (prepaid) and get the ball rolling.

IEBA would pay for the set-up which for the embroidery is \$65-\$75. This is a one time fee and then it is always ours. Screen print setup (for T-shirts) is \$125.00.

The embroidery price for the Comb and Bees would be \$13.50 per logo (possibly less) plus the price of the item you want it on. The price for the Bee and Flower is \$13.00

Long story short, it would be \$185-\$200 for one picture (embroidery & screen print) or \$250-275 for both.

So make your choice and then be ready to vote.



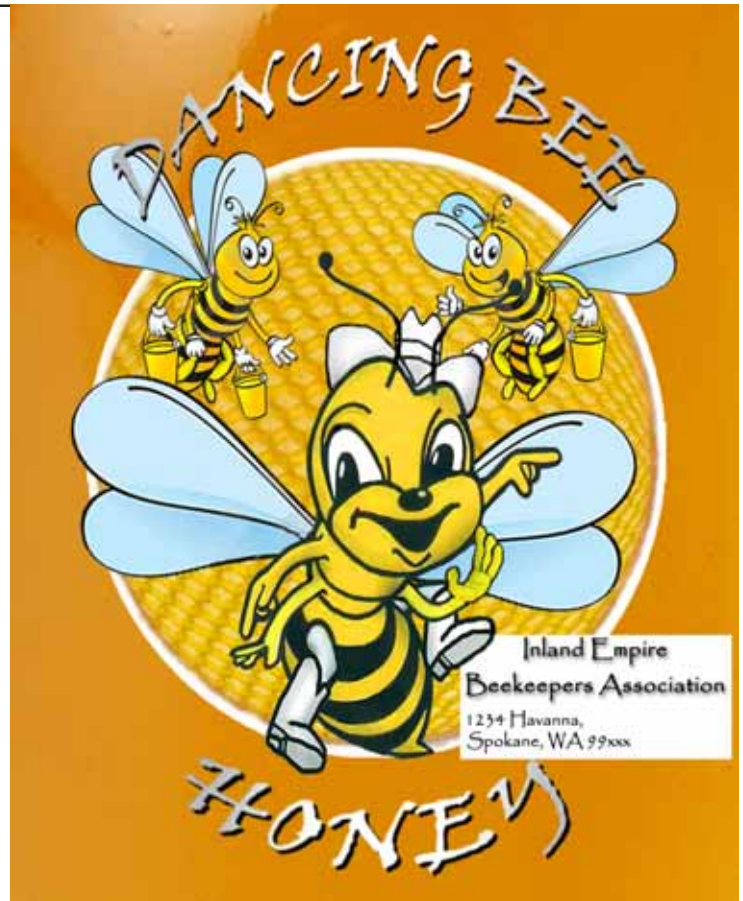
IEBA Honey Container Label Contest

In order to meet WA State RCW requirements, our honey that we sell at the fairs must have a label that identifies the seller and quantity. During previous meeting we have discussed the concept of having a label design contest. It is time to make that happen.

Proposal:

The IEBA Label Design Contest will determine the label to be used by the association for honey products to be sold by the association. The label must have the Inland Empire Beekeepers Association prominently displayed on the label. Near the bottom of the label will be the association address. At the very bottom of the label will be a place to write the quantity of the container and will look as follows: “__ lb.”. The label will have honey bees and honey comb in the logo. The primary color will be yellow. No bee stingers will be displayed. The art work must be original, not copies of other work. Once the label has been selected and the award presented the label becomes property of the Inland Empire Beekeepers Association.

Award: A \$100.00 beekeeping gift certificate will be awarded to the winner. The money may be used for any equipment, bees, or other items that are beekeeping related from any vendor. Bring the receipts to the IEBA treasurer for reimbursement.



Classified Ads

Tate's Honey Farm has all of your extracting and packaging needs as well as spring packages and queens. Woodenware for all your winter projects and spring needs. Shop hours are 8:30—2:00 every Saturday at E. 8900 Maringo, Millwood. Contact us at 509-924-6669 or online at www.tateshoneyfarm.com

BEEBOXES BY LEE

Woodenware, standard or custom orders, IPM bottom boards, Hive top feeders, etc, select lumber. Order now to be ready for spring. Lee Berchtold
(208) 687-1300

Miller's Homestead

Jim and Jenine Miller

Cheney, WA 1-509-299-9085
14606 Stangland Rd., Cheney. Look at our web site for prices on all available items.
www.millershomestead.com

Beeboxes, frames, foundation, tools and equipment open M-S 9-5:30

East Farms Feed

21518 E. Gilbert
Otis Orchards, Wash. 99027
509.928.3616

For Sale—5 Frame Nucs

\$90.00 each
Call Gib Earl
(509)936-0130

Honey Bee Packages For Sale

Packages 2-3-4 lbs / or Nucs with five frames
April through August
Call to place orders at (509)590-3319
Aleksy and Lilly Isakov
Spokane, WA



IEBA Contacts

President

Ted Swenson
509-238-6489
tedandbarb@icehouse.net

Vice President

Daren L. Mumau
509-926-4177
dmuma@wildblue.net

Treasurer

Julie Watts
509-448-1141
crittercrapfarm@netzero.net

Secretary

Linda Carney
509-448-0417
tlclimo@yahoo.com

Newsletter Editor

Dave Bearden
509-226-5231
nmsuaggie@icehouse.net

Associate Editor

Frank Seiler
509-991-3019
seilerbees@msn.com

Spokane County Fair Chairman

Linda and Rodger Carney
509-448-0417
tlclimo@yahoo.com

WSU County Extension Liaison

Joan Nolan
509-924-3652
joan1422@msn.com

North Idaho State Fair Chairman

Kelly McSheehy
(208) 687-6016
McSheehy@aol.com

Web Master

John Pierce
509-242-2035
admin@bee-mail.org

WSBA at Large Delegate, Technical Advisory Program, & IEBA Bee Class Instructor

Jim Miller
509-299-9085
jandj@cet.com

IEBA Program Chair & WSBA Area 6 Delegate

Bob Arnold
509-276-2399
sar3140@aol.com

Joy in Beekeeping

Julie Watts- Chair
Dale Edwards
Sandy Martello

IEBA Historian

Jon Burcham
509-928-4829

IEBA Website

www.inlandbeemail.com

WSBA Website

www.wasba.org

Hive Care

April:

The Bees. The weather begins to improve, and the early blossoms begin to appear. The bees begin to bring pollen into the hive. The queen is busily laying eggs, and the population is growing fast. The drones will begin to appear.

The Beekeeper. If you have not done so already, pick a warm and still day do your comprehensive hive inspections. Can you find evidence of the queen? Are there plenty of eggs and brood? Is there a nice pattern to her egg laying? Now, or very soon, on a very mild and windless day, you should consider reversing the hive deeps. This will allow for a better distribution of brood, and stimulate the growth of the colony. If stores are getting light, begin feeding and continue feeding until the nectar flow. This is the time to treat for nosema, foulbrood, and tracheal mites to ensure that the chemicals will be off before the honey flow. April is also the month for packages. .

*-adapted from
www.backyardbeekeepers.co*



USDA Spends \$28 Billion in Stimulus Funds

Last week, Agriculture Secretary Tom Vilsack announced USDA will be delivering its first actions implementing the \$28 billion provided in the American Recovery and Reinvestment Act of 2009 (Recovery Act).

"President Obama responded extraordinarily to a crisis unlike any since the Great Depression and his efforts and that of the USDA will have a significant impact not only in rural communities but in communities across the country struggling with today's tough economic times," said Vilsack.

"Implementation of programs in the act will help stimulate local economies, create jobs as well as protect and restore the environment."

Funding will help rebuild and revitalize rural communities as well as help stimulate local economies and create jobs throughout the country. Some of the projects:

- The Farm Service Agency (FSA) will use immediately \$145 million of the \$173 million provided in the Recovery Act for its Direct Operating Farm Loan Program, which will give 2,042 farmers – almost 50% are beginning farmers and 10% are socially disadvantaged producers - direct loans from the agency.
- USDA Rural Development Agency will initially provide nearly 10,000 rural families with \$14.9 million (\$1.17 billion in loan guarantees) for homeownership financing, creating or saving more than 5,000 jobs.
- USDA Rural Development will release funding for more than \$400 million in pending applications for Water and Waste grants and \$140 million in pending applications for Water and Waste Direct Loans. Nearly 13,000 jobs will be created by 400 water and wastewater projects.
- The Forest Service has released nearly \$100 million of the \$1.15 billion for hazardous fuels reduction, forest health protection, rehabilitation, and hazard mitigation activities on federal, state and private lands. Over 1,500 jobs will be created through shovel ready projects for urban youth and individuals involved in urban forestry, restoration projects fire prevention, roads, bridges, buildings,

and recreation facilities.

The Natural Resources Conservation Service (NRCS) will release up to \$145 million to restore frequently flooded land to its natural state; create jobs in rural communities nationwide when landowners establish these floodplain easements; as well as restore and protect an estimated 60,000 acres of flood-prone lands nationwide through the floodplain easement component of its Emergency Watershed Protection Program.

Plus, NRCS released \$80 million to improve fish and wildlife habitat and create or restore wetlands.

- Additionally, NRCS released \$50 million last week for rehabilitating aging watershed structures to protect lives and property and public infrastructure.
 - Roughly \$80 per family per month for over 31 million people for food assistance each month which will stimulate local economies. It's estimated that for every five dollars spent through SNAP, \$9.20 of local economic activity is generated. In addition, ARRA provides nearly \$300 million to help states administer SNAP. The first \$145 million will be released this month to assist States in responding to increased need.
 - An additional \$5 million in funding is provided for the Food Distribution Program on Indian Reservations (FDPIR) for facility improvements and equipment upgrades. This is in addition to the over \$114 for food distribution on Indian reservations this year. This program provides a vital service. Reservations and tribal lands are often remote with limited service from grocery stores. It provides commodity foods to low-income households, including the elderly, living on Indian reservations, and to Native American families residing in designated areas near reservations and in the State of Oklahoma. Currently, there are approximately 243 tribes receiving benefits under the FDPIR through 98 ITOs and 5 State agencies.
 - In addition, the Recovery Act provides additional funding for the Emergency Food Assistance Program. Through this program, USDA provides commodities and administrative funds to states for further distribution to local organizations that assist the needy, including food banks, food pantries, and soup kitchens. The first \$25 million to support administrative functions will be distributed this month.
- The American Recovery and Reinvestment Act of 2009 (Recovery Act) was signed into law by President Obama on Feb. 17, 2009. More information about USDA's efforts regarding the Recovery Act is available at www.usda.gov/recovery.



**Inland Empire
Beekeepers
Association**

Next Meeting:
Friday April 10th
Social Time 6:00 Meeting 6:30

The Inland Empire Beekeepers Association (IEBA) meets the 2nd Friday of every month at the Spokane County Ag Extension office by the County Fairgrounds, at 222 N. Havana. The association is affiliated with the Washington State Beekeepers Association (WSBA). IEBA membership dues are \$5.00 for an individual or \$10.00 for the entire family. This includes your receiving the *Inland Beemail*, which is published by the association every month.

INLAND BEEMAIL

Dave Bearden, Editor
5319 N Simpson Rd
Otis Orchards
WA 99027

Phone: (509) 226-5231
email: nmsuaggie@icehouse.net

Send To:

IEBA

Birthdays & Anniversaries

April 2009

Happy April Bee-days

3rd -- Pam Zack

6th -- David Evans

7th -- Cherry Edwards

9th -- Carol Wright

13th -- Roger Carney

14th -- Rick Sherman

15th -- Art Ross

28th -- Peter Ice

April Anniversaries - Congratulations!

4th -- Bill & Julie Watts

18th -- Al & Patsy Dwinell

Beekeeping Calendar - Bob Arnold

April

When bees are flying well inspect the hives. Check for and kill drone laying queens introduce overwintered nuc with stronger colonies or combine remaining bees with viable colonies. Check for American Foulbrood (AFB). Equalize stored honey in hives. Place 1:1 warm sugar syrup in a feeder in the upper brood chamber. Feed enough to provide at least 4 full frames of honey or syrup stores in the colony. Feed pollen patties if pollen is in short supply. Move the brood chamber having mostly feed to the bottom board with the box having empty brood combs to the top. For 3 brood chamber colonies move the empty boxes above the box with the most brood and bees. Keep some empty comb above the bees through the dandelion flow. Keep the entrance reducer on the colony. Start new packages, keep 1:1 sugar syrup feed on the package continuously until honey flow starts if started on foundation. If on drawn comb keep feed on until they don't want it. Check queen viability every 5 days. Replace immediately if she isn't laying properly or drone brood is appearing in worker comb. Don't give her a second chance! Keep the package in a single box until it is crowded with bees. Keep laying space for the queen in established colonies. Put on drone comb for trapping mites